



Horizontal Filter/Separators

HV and HVS Series

Compact Side and End Opening Horizontal Filter/Separator Vessels for Mobile Fueling Equipment

Designed Specifically for
Hydrant Carts and Refuelers

FEATURES

- **Reduced Weight** is vital in the manufacture of refuelers and hydrant carts. Velcon Filter/Separators drastically reduce the weight of the vessel.
- **Reduced Size** is another important factor in designing refuelers and hydrant carts. Velcon Filter/Separators reduce the size of the vessel by up to 50%.
- **Easier Maintenance.** One piece cartridge design provides faster changeout and fewer potential gasket leaks than stacked cartridges.
- **Industry Qualified.** Velcon HV and HVS Series Horizontal Filters/Separators are fully qualified to API Publication 1581, Third Edition, Groups I and II, Class C (mobile installations). These units incorporate one piece threaded base coalescer elements for easy, reliable installation and reusable one piece Teflon® coated screen separators.

SPECIFICATIONS

- 150 psi ASME Code Construction
- Victaulic Connections (Flanges Optional)
- Swing Bolted Closure
- Buna-N O-Ring Cover Seal
- Spider Assembly to stabilize cartridges
- Mil-C-4556 Epoxy Coated Interior, Primed Exterior
- Fittings for Pressure Relief Valve, Air Vent, and Pressure Gauge
- Sump is covered with plywood when shipped. Bolted steel cover is available as an option



Model No. HVS-2228M

A fully-qualified 600 US GPM Filter/Separator.
Side Opening unit is only 22 inches in diameter
and 65 inches long.



Model No. HV-1633M

A fully-qualified 310 US GPM Filter/Separator.
End Opening unit is only 16 inches in diameter
and 45½ inches long.

® Teflon is a registered trademark of E.I. du Pont de Nemours & Co., Inc.

Horizontal Filter/Separators for Mobile Fueling

HV Series End Opening Vessels



END OPENING VESSELS CARTRIDGE SELECTION

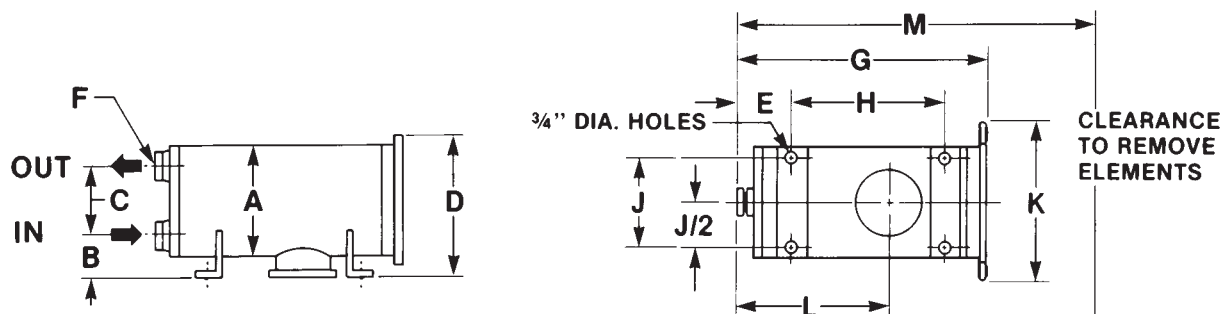
Vessel Model	Flow-US GPM Kerosene	Cover Style	Coalescer Elements		Separator Elements		
			Qty	83 Series ⁽¹⁾	87 Series ⁽²⁾	Qty	Model
HV-1416M	100	Flat	2	I-61683TB	I-61687TB	1	SO-318V
HV-1622M	200	Flat	3	I-62283TB	I-62287TB	1	SO-424V
HV-1633M	310	Flat	3	I-63383TB	I-63387TB	1	SO-436V
HV-2233M	430	Flat	4	I-63383TB	I-63387TB	2	SO-424V
HV-2238M	500	Flat	4	I-63883TB	I-63887TB	2	SO-430V
HV-2244M	585	Flat	4	I-64483TB	I-64487TB	2	SO-436V
HV-2456M	760	Flat	4	I-65683TB	I-65687TB	2	SO-636V
HV-2828M*	625	Dome	7	I-62883TB	I-62887TB	2	SO-624V
HV-2833M*	755	Dome	7	I-63383TB	I-63387TB	2	SO-636V
HV-2838M*	880	Dome	7	I-63883TB	I-63887TB	2	SO-636V
HV-2844M*	1030	Dome	7	I-64483TB	I-64487TB	2	SO-640V
HV-2856M*	1310	Dome	7	I-65683TB	I-65687TB	2	SO-648V

NOTES

⁽¹⁾ Specify "83 Series" for A.P.I. Group I, Mil-F-8901, or Gasoline service.

⁽²⁾ Specify "87 Series" for A.P.I. Group II service or for applications where both A.P.I. Group II and Mil-F-8901 performance are required.

* Inlet/Outlet flanges on HV-28xxM vessels are 150 lb. raised face.



END OPENING VESSELS DIMENSIONS**

Vessel Model	<i>Dimensions are in inches</i>												Wt Lbs w/Skid	Vol US Gal
	A	B	C	D	E	F	G	H	J	K	L	M		
HV-1416M	14	6 $\frac{3}{4}$	8 $\frac{1}{2}$	19	4 $\frac{7}{8}$	2	30	20 $\frac{1}{4}$	10 $\frac{3}{4}$	18 $\frac{3}{8}$	15 $\frac{5}{8}$	45	400	18
HV-1622M	16	6	10	21	9 $\frac{1}{8}$	4	34 $\frac{1}{2}$	16	10 $\frac{3}{4}$	20 $\frac{1}{2}$	17 $\frac{1}{4}$	66	440	32
HV-1633M	16	6	10	21	9 $\frac{3}{8}$	4	45 $\frac{1}{2}$	27	10 $\frac{3}{4}$	20 $\frac{3}{8}$	28 $\frac{1}{2}$	79	450	42
HV-2233M	22	10 $\frac{1}{2}$	10	29	11 $\frac{1}{2}$	4	48	29	16	30	32 $\frac{3}{4}$	82	800	69
HV-2238M	22	10 $\frac{1}{2}$	10	29	11 $\frac{1}{2}$	4	53	34	16	30	37 $\frac{1}{4}$	89	835	77
HV-2244M	24	12	11 $\frac{1}{2}$	33	15	6	62 $\frac{1}{2}$	31 $\frac{1}{2}$	18	34	36	88	870	87
HV-2456M	24	10 $\frac{1}{2}$	12	29 $\frac{1}{2}$	12	6	68 $\frac{1}{2}$	43	18	34	46	96 $\frac{1}{2}$	1255	124
HV-2828M	28	10 $\frac{1}{2}$	16 $\frac{3}{4}$	35 $\frac{1}{2}$	12	6*	56	22 $\frac{1}{2}$	21	36	23 $\frac{3}{4}$	69	1210	120
HV-2833M	28	10 $\frac{1}{2}$	16 $\frac{3}{4}$	35 $\frac{1}{2}$	12	6*	61	28	21	36	23 $\frac{3}{4}$	83	1255	135
HV-2838M	28	10 $\frac{1}{2}$	16 $\frac{3}{4}$	35 $\frac{1}{2}$	12	6*	61	28	21	36	23 $\frac{3}{4}$	85	1300	150
HV-2844M	28	10 $\frac{1}{2}$	16 $\frac{3}{4}$	35 $\frac{1}{2}$	12	6*	63	29	21	36	23 $\frac{3}{4}$	92	1350	166
HV-2856M	28	10 $\frac{1}{2}$	16 $\frac{3}{4}$	35 $\frac{1}{2}$	12	6*	73	41	21	36	23 $\frac{3}{4}$	116	1460	198

**Dimensions shown are for estimating purposes only. For exact dimensional detail, obtain a certified copy of specific vessel drawing.

HV Series

Side Opening Vessels

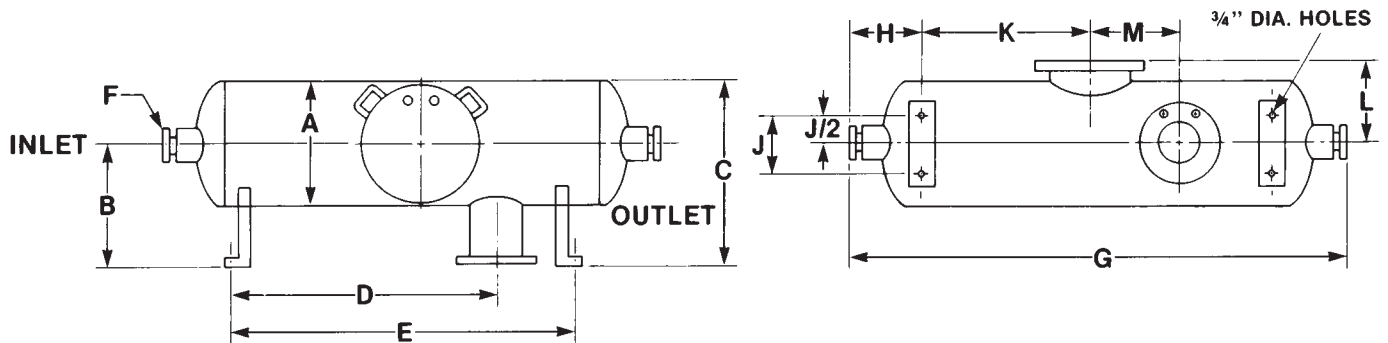


SIDE OPENING VESSELS CARTRIDGE SELECTION

Vessel Model	Flow-US GPM Kerosene	Qty	Coalescer Elements		Separator Elements	
			83 Series ⁽¹⁾	87 Series ⁽²⁾	Qty	Model
HVS-2222M	450	7	I-62283TB	I-62287TB	3	SO-609V
HVS-2228M	600	7	I-62883TB	I-62887TB	4	SO-609V
HVS-2628M	755	9	I-62883TB	I-62887TB	5	SO-609V
HVS-2828M	885	10	I-62883TB	I-62887TB	6	SO-609V
HVS-3133M	1205	12	I-63383TB	I-63387TB	8	SO-609V

NOTES

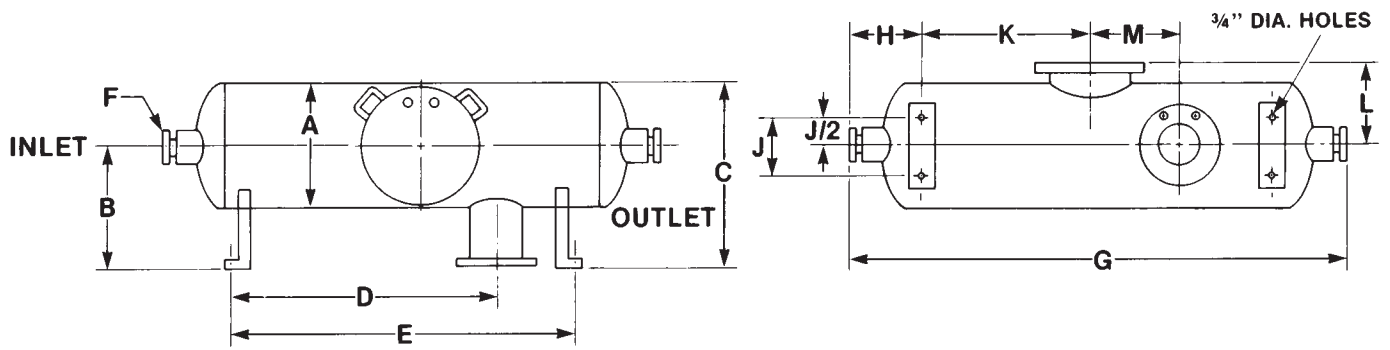
- ⁽¹⁾ Specify "83 Series" for A.P.I. Group I, Mil-F-8901, or Gasoline service.
- ⁽²⁾ Specify "87 Series" for A.P.I. Group II service or for applications where both A.P.I. Group II and Mil-F-8901 performance are required.



SIDE OPENING VESSELS DIMENSIONS**

Vessel Model	<i>Dimensions are in inches</i>													Wt Lbs w/Skid	Vol US Gal
	A	B	C	D	E	F	G	H	J	K	L	M			
HVS-2222M	22	14	29	30½	41	4	60	9½	16	30½	16½	0	1070	85	
HVS-2228M	22	14	29	35½	46	4	65	9½	16	35½	15½	0	1100	95	
HVS-2628M	26	16	32	36	45	6	71	13	21	30	19½	6	1340	132	
HVS-2828M	28	18	33	36	45	6	71	15	21	30	19¼	6	1580	150	
HVS-3133M	31	19	35	36	49	6	77	14	22	36	20¾	0	2000	195	

**Dimensions shown are for estimating purposes only. For exact dimensional detail, obtain a certified copy of specific vessel drawing.



FISCHER-ROBERTSON, INC.
 3890 Symmes Rd.
 Hamilton, OH 45015
 Phone: 513-860-3445
 Fax: 513-860-4744
 e-mail: sales@fischer-robertson.com
 www.fischer-robertson.com

OVERSEAS AFFILIATES:
 Frankfurt/M., W. Germany & Singapore

**Fluid
 Decontamination
 Specialists**