

Fulflo® FB Filter Vessels

- Carbon Steel
- 304L and 316L Stainless Steel

Bag Filter Vessel Series

FB Model Bag Filter Vessels Designed for Economical Filtration of Liquids and Gasses

Applications

- Potable Water
- Process Water
- Edible Oils
- Coatings
- Lubricants
- Coolants
- Cutting Oils
- Solvents



Design Features

- Single O-ring design closure assures quick, positive cover sealing. (O-rings are not required to seal filter bags.)
- Swing bolts with eyenuts for fast, easy opening and closing of cover.
- Buna-N O-ring standard with EPR, Viton* and Teflon* available.
- Maximum design pressure and temperature is 150 psi (10.3 bar) at 450°F** (232°C).
- ASME Code UM stamp is standard (U stamp is optional).
- Threaded vent and drain connections.
- Adjustable leg height. Threaded or flanged inlet and outlet.
- Side inlet; cover opens without disconnecting piping.
- Side inlet, bottom outlet and crevice-free welded design provide a smooth interior for easy wash-out and cleaning.
- Hinged cover for easy opening.
- Positive seal of bags prior to closing the vessel cover.
- Optional hold-down assembly for conversion to “G” style bag media for basket seal available.

Process Filtration Division

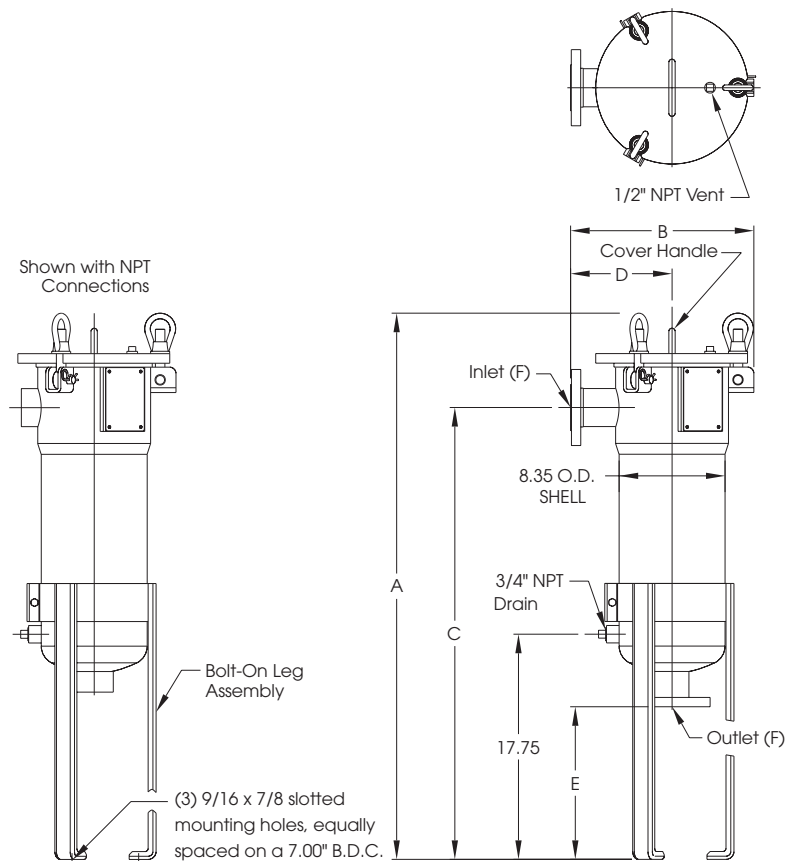


WARNING! FAILURE OR IMPROPER SELECTION OR IMPROPER USE OF THE PRODUCTS AND/OR SYSTEMS DESCRIBED HEREIN OR RELATED ITEMS CAN CAUSE DEATH, PERSONAL INJURY AND PROPERTY DAMAGE.

This document and other information from Parker Hannifin Corporation, its subsidiaries and authorized distributors provide product and/or system options for further investigation by users having technical expertise. It is important that you analyze all aspects of your application and review the information concerning the product or system in the current product catalog. Due to the variety of operating conditions and applications for these products or systems, the user, through its own analysis and testing, is solely responsible for making the final selection for the products and systems and assuring that all performance, safety and warning requirements of the application are met. The products described herein, including without limitation, product features, specifications, designs, availability and pricing, are subject to change by Parker Hannifin Corporation and its subsidiaries at any time without notice.



Bag Filter Vessel Series



Design Specifications

| Model | Bag Style | Typical Aqueous Flow [†] (gpm) | Dimensions (in) | | | | | | Shipping Weight (lbs) | Volume (gal) |
|---------|-----------|---|-----------------|-------|-------|------|-------|-------|-----------------------|--------------|
| | | | A | B | C | D | E | F | | |
| FB11-2 | Single | 80 | 43.06 | 12.25 | 35.63 | 5.75 | 13.19 | 2 NPT | 90 | 5.4 |
| FB11-2F | Single | 80 | 43.06 | 14.50 | 35.63 | 8.00 | 12.00 | 2 NPS | 100 | 5.4 |
| FB12-2 | Double | 160 | 53.94 | 12.25 | 46.50 | 5.75 | 13.19 | 2 NPT | 95 | 7.8 |
| FB12-2F | Double | 160 | 53.94 | 14.50 | 46.50 | 8.00 | 12.00 | 2 NPS | 105 | 7.8 |
| FB12-3F | Double | 160 | 53.94 | 14.50 | 46.50 | 8.00 | 11.75 | 3 NPS | 115 | 7.8 |

[†] Actual flow rate is dependent on fluid viscosity, micron rating, contaminant and media type. Consult flow charts for each application.

Ordering Information

| | | | | |
|---------------------------|-----------|---------------------|---|--------------------------|
| 4L | FB | 11 | — | 2F |
| Material | Model | Media Requirement | | Inlet/Outlet Flange Size |
| No Symbol = Carbon Steel | | 11 = One Single Bag | | 2 |
| 4L = 304L Stainless Steel | | 12 = One Double Bag | | 3 |
| 6L = 316L Stainless Steel | | | | No F = NPT |

Fischer-Robertson, Inc
 3890 Symmes Road
 Hamilton, Ohio 45015
 p: 513-860-3445
 f: 513-860-4744
 sales@fischer-robertson.com
 www.fischer-robertson.com

* A trademark of E. I. du Pont de Nemours & Co.

** Operating temperature limited to 250°F (121°C) by standard Buna-N O-ring and exterior paint on carbon steel models. Optional O-ring materials are available.